



# The Peak Royale

## INFO MEMO





## THE PEAK ROYALE

The Peak Royale is a part of the Springhil Royale Suites on the 50th - 59th floor

<b>Address</b>	<b>: Benyamin Suaeb Blok D9, Jakarta Pusat</b>
<b>Developer</b>	<b>: PT. Kreasi Bersama Maju</b>
<b>Contractor</b>	<b>: PT. Nusa Raya Cipta, Tbk</b>
<b>Architect</b>	<b>: PT. Airmas Asri</b>
<b>Land Size Area</b>	<b>: 7.070,9 M<sup>2</sup></b>
<b>Building Area</b>	<b>: 98.616,6 M<sup>2</sup></b>
<b>Total Floor</b>	<b>: 45 floor + semi basement + basement</b>
<b>Total Unit</b>	<b>: 237 units</b>
<b>Retail Shop</b>	<b>: 15 units</b>
<b>Lobby</b>	<b>: Exclusives Lobbies</b>
<b>Total Lift</b>	<b>: 4 passenger &amp; 1 lift service</b>





TYPE	Qty Unit	SMG
1 Bedroom Emerald	24	965
1 Bedroom Ruby	2	102
2 Bedroom Shapire	4	382.1
<b>TOTAL</b>	<b>30</b>	<b>1.449</b>

ROYALE SUITES	151	22.860
THE PEAK	30	1.449
HOTEL	180	6.747
<b>TOTAL</b>	<b>361</b>	<b>31.055</b>

LEGEND	SMG	Est Nett
1 Bedrom Emerald	: 39.2 - 42.1	31 - 31.58
1 Bedroom Ruby	: 44.6 - 52.9	35.03 - 41.9
2 Bedroom Shapire	: 92.1 - 99.6	72.8 - 76.38





IN THE HEART OF JAKARTA IS YOUR HOME  
SPRINGHILL @ KEMAYORAN INTERNATIONAL CBD



DISTANCE



\*) MALL : CEMPAKA MAS, TAMAN ANGGREK , EMPORIUM MALL PLUIT, PLUIT JUNCTION, PLUIT MALL , GRAND INDONESIA, PLAZA INDONESIA, GOLDEN TRULY, ATRIUM SENEN, FOOD CENTRUM, SUNTER, ARTHA GADING MALL, MOI, KELAPA GADING MALL, CITRALAND, CENTRAL PARK, PLAZA SEMANGGI, MGK KEMAYORAN, PIK AVENUE



The Peak Royale

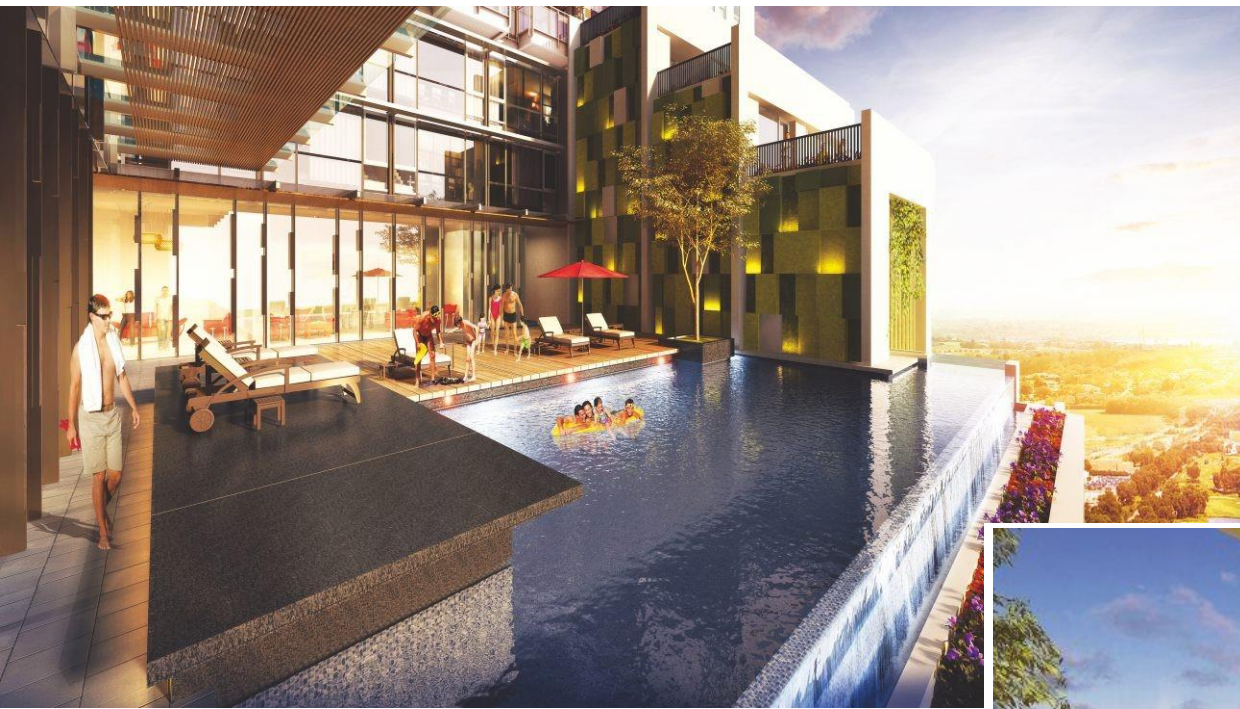


- 4 Next to Golf Course
- 4 Exclusive design with spacious balcony
- 4 Spectacular view (sea, golf & city view)
- 4 Two exclusive pools, twice the joy (Family Pool & Sky Pool)
- 4 Exclusive Lobbies & Private Lift
- 4 Smarthome Ready
- 4 1 Parking Lot for every 3 units
- 4 Commercial area, Function Hall, Gym & Educational Facility
- 4 Modern Facility
- 4 Security 24 Jam, Triple Play Ready, Access Card



# SWIMMING POOL

prime360.id<sup>®</sup>  
Digital Sales Consultant & Partner



SKY POOL (ROOF TOP)

FAMILY POOL



The Peak Royale





## 1 BEDROOM EMERALD FLOOR PLAN

Nett Estimated : 31.5 m<sup>2</sup>  
Semigross : 40.0 m<sup>2</sup>

KEYPLAN  
50TH FLOOR





## 1 BEDROOM RUBY FLOOR PLAN

Nett Estimated : 38.7 m<sup>2</sup>  
Semigross : 49.0 m<sup>2</sup>

## KEYPLAN

51ST FLOOR

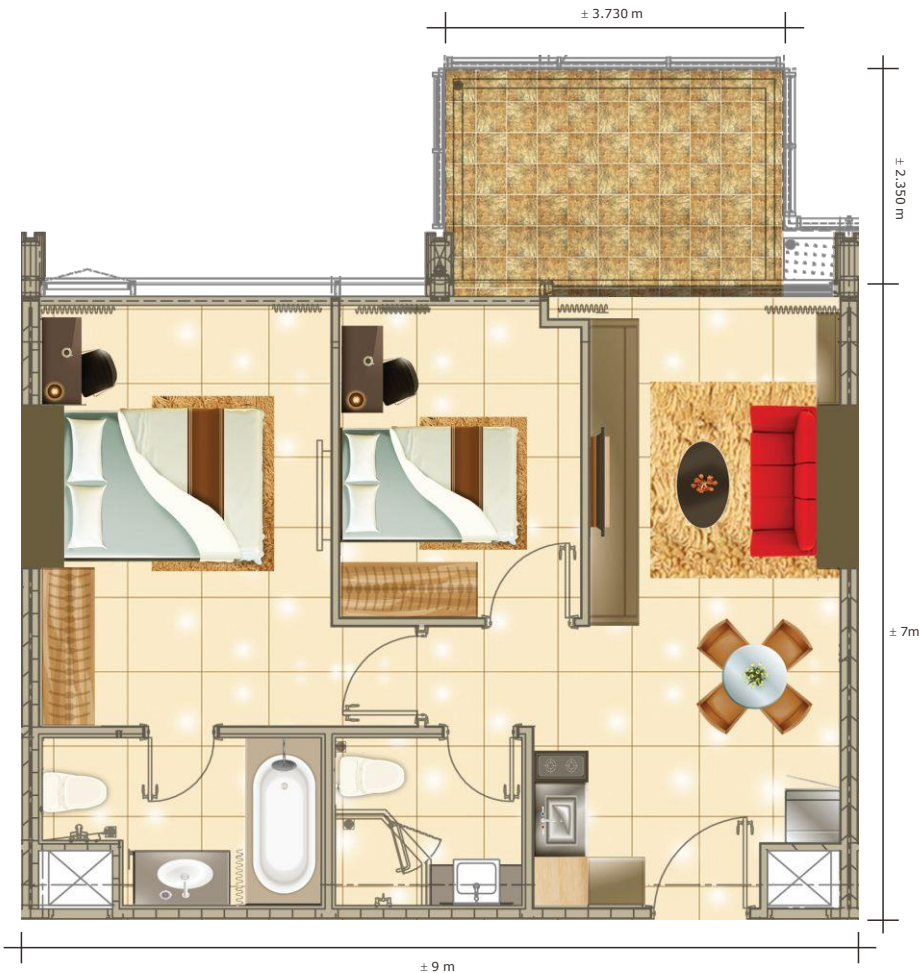


## 2 BEDROOM SAPPHIRE FLOOR PLAN

Nett Estimated : 74.0 m<sup>2</sup>  
Semigross : 93.8 m<sup>2</sup>

## KEYPLAN

51ST FLOOR



The Peak Royale





- Living Room & Dining Room** Luxurious Marble (Flooring), Painted (Walls), Gypsum Board (Ceiling)
- Master Bedroom & Bedroom** Luxurious Marble (Flooring), Painted (Walls), Gypsum Board (Ceiling)
- Bathroom** Marble (Flooring), Water Resistant Gypsum Board (Ceiling)
- Balcony** Homogenous Tiles with Natural Stone Pattern, Glass and Stainless Steel (Railing)









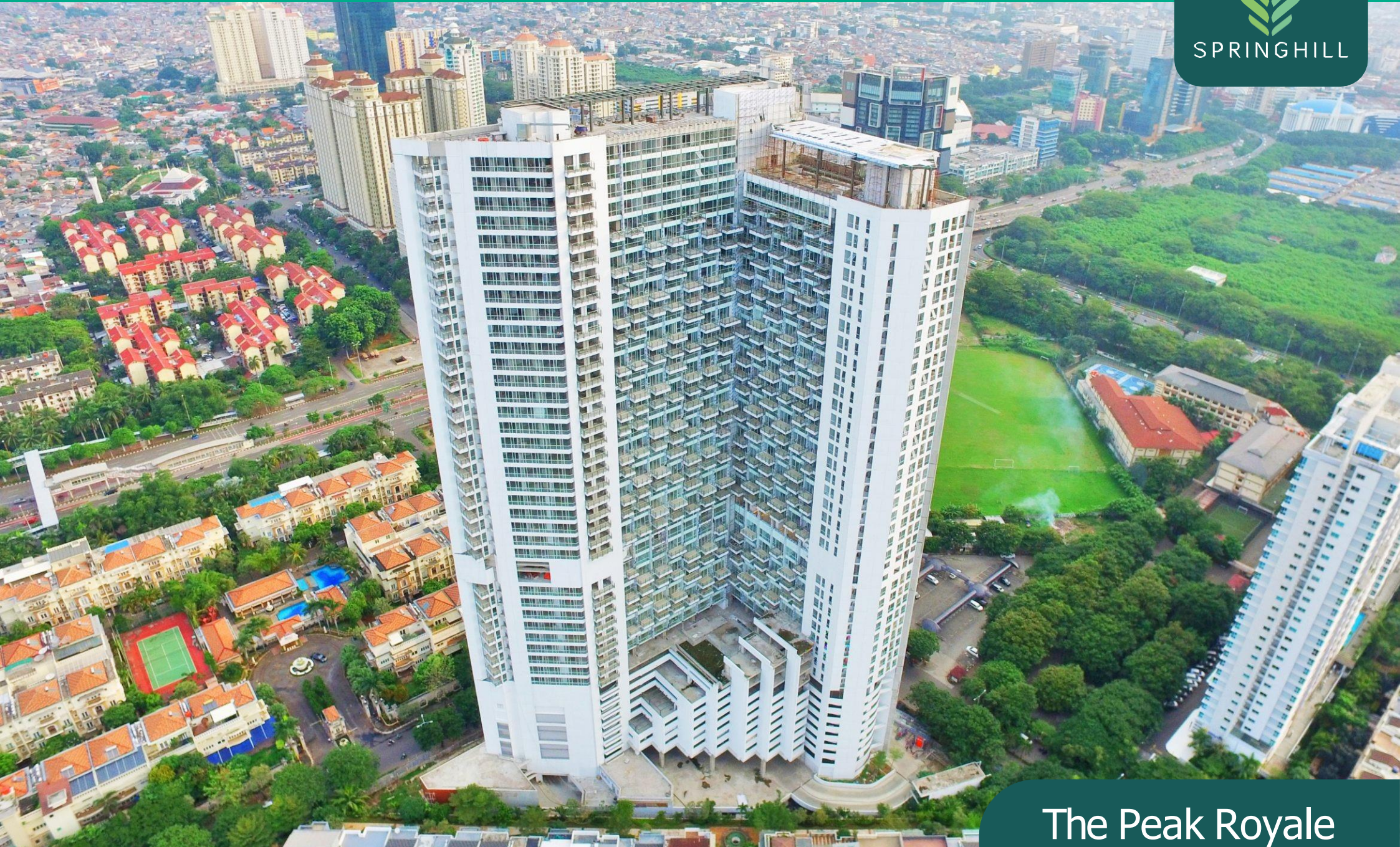


PROGRESS AUGUST 2022

**prime360.id**  
Digital Sales Consultant & Partner



SPRINGHILL



The Peak Royale





While every reasonable care has been taken in preparing this brochure, the developer and its agents cannot be held responsible for any inaccuracies. All statements are believed to be correct but are not to be regarded as final statements or representation of fact. All information and specifications are current at time of print and are subject to changes as may and cannot form part of an offer or contract. All plans are subject to any amendments approved by the relevant authority. Illustrations shall not be regarded as representation of fact. The size and dimension are approximate using equipment/criteria and method determined by the developer. The developer retains full rights to alter or improve images without any prior notice.

Copyright © August 2022





# SPRINGHILL

---

## ROYALE SUITES

[www.springhillroyalesuites.com](http://www.springhillroyalesuites.com)

Corporate Founding Member of Green Building Council Indonesia



[www.springhillgroup.id](http://www.springhillgroup.id)

 [springhillgroup](https://www.facebook.com/springhillgroup)  [@springhillgroup](https://www.instagram.com/springhillgroup)



**Marketing Office :**

**Springhill Royale Suites**

Jl. Benyamin Suaeb Blok D9,

Kemayoran, Jakarta Pusat 14410