



VIRIDIA

PARK HOME SERIES



LAVON II
YOUR WORLD TO DISCOVER



THE UNIQUE INTERIOR



THE FINEST DETAILS IN EVERY CORNER

Each individual aspect of a Lavon II home is meticulously designed with comfort, functionality, and flexibility in mind to ensure a seamless transition for its residents. From windows in every room to high-volume ceilings, these unique attributes make the Viridia home a dream to come back to.

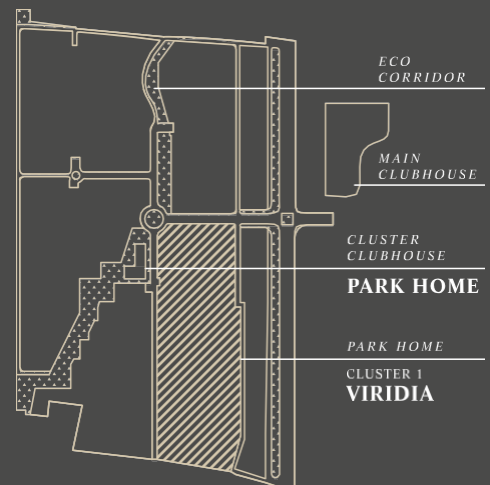




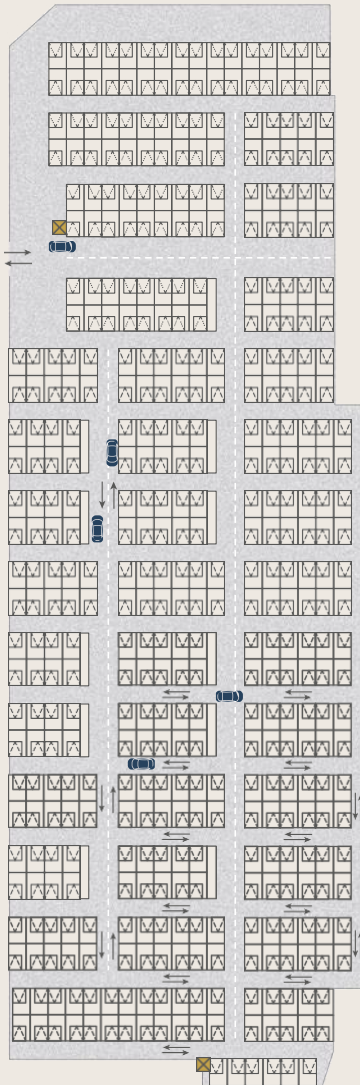
INTRODUCING YOUR NEW STANDARD OF LIVING



The Lavon II homes are largely inspired by Western architecture design, seen throughout the various types of houses in the master plan. Viridia aims to project the identity of a well-structured home, where the design is made up of a composition of volumes, integration of traditional materials and large windows.



SITE PLAN



GROUND FLOOR



1ST FLOOR



A HOST OF CHOICES

Cluster 1 - Viridia Site Plan

LEGEND

- TYPE F | 6x9
- LIFT

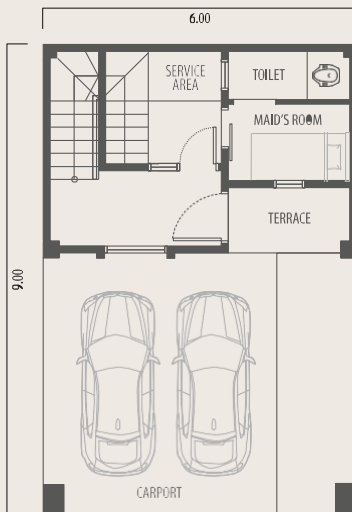


FLOOR PLAN



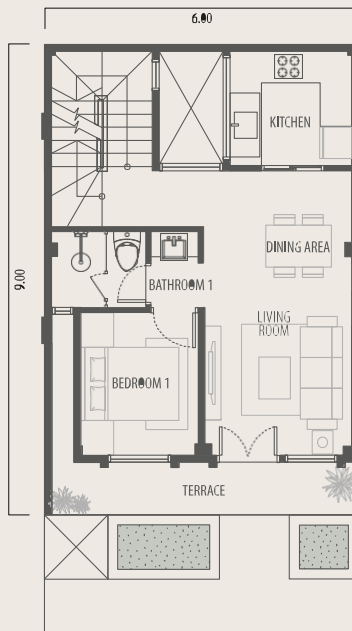
F SERIES

BUILDING AREA	LAND AREA	TOTAL STOREYS
124.5sq.m.	54sq.m.	2.5



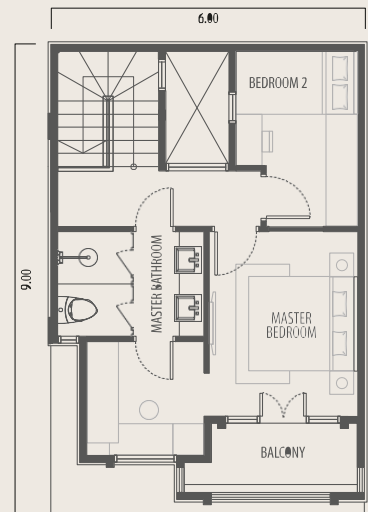
1 Bedroom 1 Bathroom

GROUND FLOOR



1 Bedroom 1 Bathroom

1ST FLOOR



2 Bedrooms 1 Bathroom

2ND FLOOR

TYPE F THE UNIQUE INTERIOR



COVERED CARPARK

Each unit is equipped with 2 parking lots in the covered parking area, sheltering your vehicles from the elements.



PARENTS' ROOM

Located on Level 1 to ease mobility for the elderly, and to ensure that everything is within close reach.



C-SHAPED CLOSED KITCHEN

Built to ensure maximised efficiency and comfortable cooking space for all.



PRIVATE LAUNDRY YARD

A designated indoor laundry area for the privacy of inhabitants.



MAID'S ROOM

Enjoy the privacy of your own home with the maid's room located on the Ground Level.

PRIVATE GARDEN

Enjoy your very own private garden for you to plant your favourite plants, to maintain the luxurious feel of the estate.



NATURAL LIGHTING

Windows in every unit provide natural daylight, thus reducing electricity costs.



ENGINEERED LAMINATE WOOD FLOORING

Engineered hardwood floors in the bedrooms are resistant to changes in temperatures and humidity.



WALK-IN WARDROBE

A specialised space dedicated to your fashion needs.



NATURAL DAYLIGHT FOR TOILET AREA

Presence of a window in the toilet allows for natural daylight to flow in.



A Prestigious Development by



SPECIFICATIONS

STRUCTURE Reinforced Concrete	WALL Light Brick Wall	ROOF Roof Tile	WINDOWS Aluminium Frame
CEILING Gypsum Board for Dry Area Water Resistant Gypsum Board for Wet Area			
DOORS <i>Main Entrance</i> Solid Engineered Wood <i>Bedrooms</i> Honeycomb Wood <i>Bathrooms</i> Water Resistant Door			
FLOORING <i>Living & Dining</i> Homogenous Tile <i>Bedrooms</i> Laminate Flooring <i>Kitchen</i> Homogenous Tile <i>Bathrooms</i> Homogenous Tile			
WALL FINISHING <i>External</i> Paint Weathershield <i>Internal</i> Plaster + Skimcoat			
SANITARY Grohe, Toto or Equivalent			
INSTALLATION <i>Water</i> PAM <i>Electrical</i> 2.200 Watt			

LAVON MARKETING GALLERY

Jl. Suvarna Sutera Boulevard No. 19,
Suvarna Sutera, Pasar Kemis, Tangerang, 15560

WHATSAPP 0822-11229988
FB & IG @lavontangerang

021-39729988
LAVON.CO.ID

The images depicted in this publication are artist's impressions and representations only and are in no way a claim by the developer as to the final product. All dimensions are approximate and subject to normal construction variances and tolerances. Developer makes no representations or warranties except as may be set forth in the Sale and Purchase Agreement. While every reasonable care has been taken in preparing this material the developer cannot be held responsible for any inaccuracies in its contents.